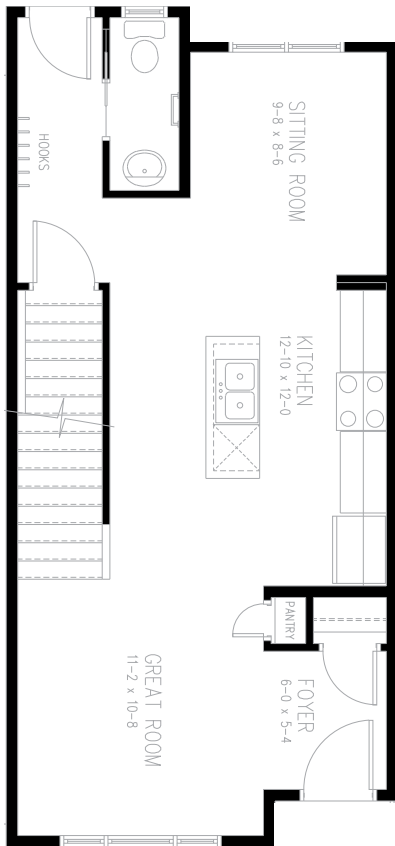




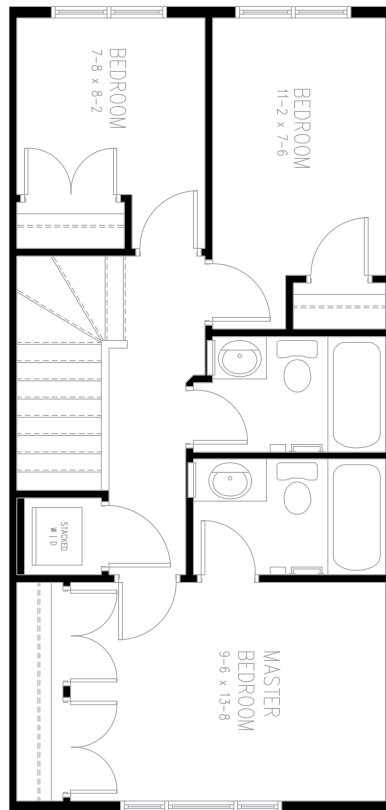
CityLife
homes
by Birchwood

The Lion's Park

1212 sq.ft
Two Storey
3 bedrooms / 2.5 baths



Main Level
605 sq.ft.



Upper Level
607 sq.ft.

Customize With Structural Options:

- *Extended sitting room*
- *Great room desk/ Entertainment nook*
- *Island eating bar*
- *Add coat nook to mudroom*
- *Closet cantilevers in bedrooms 2 & 3*
- *4 piece master ensuite*